

BOARD OF GOVERNORS

Joni Berry
Chairman of the Board
SHARE, Inc.

Larry Hagman
Actor

Rafer Johnson
Olympic Decathlon Champion
Chairman, Board of Governors
Special Olympics,
Southern California

Monte Markham
Actor, Director,
Producer, Writer

Jerry Moss
Chairman, ALMO Sounds, Inc.

Carl Terzian
Chairman of the Board
Carl Terzian Associates

The Hon. Dickran Tevzian
United States District Judge
Central District of California

TIMELESS FRIENDSHIPS

More than 240 guests experienced an evening of distinctive wine, exotic appetizers and entrees, and a surprisingly delightful program. No one was more surprised and delighted than the guest of honor, Carl R. Terzian, to see himself as a young contestant on "You Bet Your Life" with Groucho Marx (1957).

Timeless Friendships, honoring distinguished business and community leader Carl R. Terzian, was held May 6 at Le Meridien Hotel in Beverly Hills. The Wine Tasting and Dinner raised an unprecedented \$80,000 for ECF programs.

Judge Dickran Tevzian and real estate executive Joyce Rey, long-time friends of Terzian, were among the guest speakers touting Terzian's accomplishments. Terzian is a member of ECF's Board of Governors and provides public relations counsel to ECF. ■

See photos on Page 4.

ARTIST'S NOTE

Reggie Martin

Reggie Martin came to the ECF Art Center in 1998. His stylistic drawing is very suitable to the graphic design field. Reggie's illustrations are a reflection of pop culture with subject matter often drawn from popular products and advertisements, often depicting people celebrating, laughing, or playing. ■



guest from oman



ECF hosted Masooma Hameed Al Saleh, Director, Association of Early Intervention for Children with Special Needs, from the Sultanate of Oman recently. Shown are Gabriela Kayacan (ECF), Elinor Szekunda (ECF), Ms. Al Saleh, Sandy Wolff (ECF), and Connie Vasquez from the International Visitors' Council. Sponsored by the U.S. Department of State, the visit focused on sharing best practices in early intervention.

reaching out
empowering people with disabilities



fall | 04

HOME RUN SCORES AGAIN

At this year's 16th Annual ECF Home Run, the number of runners, volunteers and dollars were up from the past two years. These results brought smiles to the faces of Home Run volunteers who have worked to revitalize the event following a change in the date from September to June and an untimely cancellation of the race in 2002. Also smiling are ECF's clients, who will benefit from the gross revenue of more than \$47,000.

Home Run is one of ECF's major annual fund-raising events. Held in the mixed-terrain course at Elysian Park in Los Angeles, the 5K/10K Runs, 5K Walk, and 1-Mile Fun Run are sanctioned by USA Track & Field (USATF).

The inaugural Home Run took place in September of 1988. It was a sanctioned race through Elysian Park, which is located near Dodger Stadium. The Dodgers' home game against the Cincinnati Reds took place that afternoon with race winners being escorted onto centerfield and introduced on DodgerVision to thousands of baseball fans during the pre-game ceremony.

This year, Home Run participants received goodie bags, commemorative tank tops, and tickets to the sold-out Dodgers-Angels game that day or vouchers for a remaining 2004 Dodgers home game.

Honorary Chair Dave Kilde fired up the runners and walkers at the starting line and congratulated them as they crossed the finish line. Kilde's film credits as an actor and stunt coordinator include "Matrix Reloaded" and "Swordfish." He joins other outstanding community citizens who served as Home Run Honorary Chairs, including, Olympic Champion Rafer Johnson, Vin and Sandra Scully, and Tommy Lasorda.

ECF and the Home Run Committee thank the following volunteer groups for their service: Disney VolunteARS, The Gas Company Employees, San Fernando Explorers, Boy Scout Troop 550, ECF Board members and staff, and USC Center for Engineering Diversity.

In addition, ECF and the 2004 Home Run Committee thank the following sponsors and major donors for their generosity: Almo Sounds, Capital Group, James and Terri Walker, Kingsbury Uniforms, WMC Direct, R.K. Schaaf Associates Inc., Micah McCloskey's Custom Cycles, and Sterling Property Services. ■

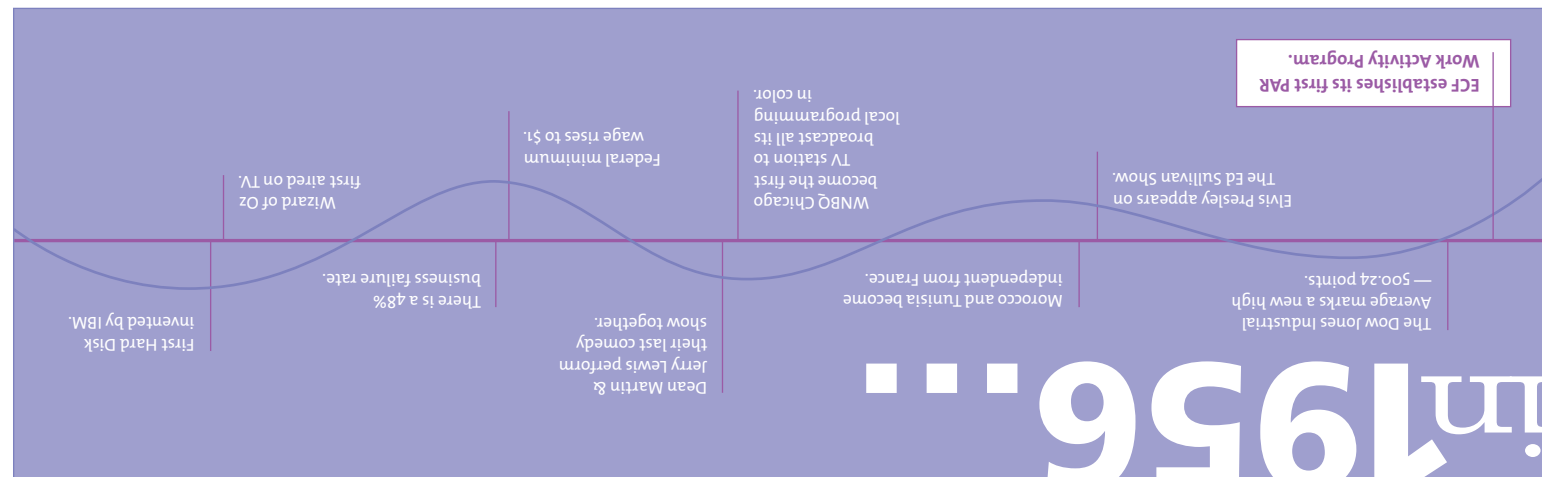


1. More than 300 participants occupy one lane on Academy Road as they make their way along the racecourse around Elysian Park. 2-3. Home Run delegates at Dodger Stadium during pre-game ceremonies: Dave Kilde, Pamela Black of WMC Direct, Jose Gonzales of Capital Group, Jeff Snyder for the 5K runners, Kiran Verma for the 10K runners, and Leslie Kearns for ECF. 4. Actor and Honorary Chair Kilde starts the race with ECF Board Member Art Naddour at the wheel.



Non-Profit Org.
U.S. Postage
PAID
Los Angeles
Permit No. 21608

Exceptional Children's Foundation (ECF)
8740 West Washington Boulevard
Culver City, CA 90232
tel: 310.204.3300



GRAPHIC DESIGN: WARREN GROUP | STUDIO DELUXE

BOARD OF DIRECTORS
Chair
Gene Siciliano, CPA, CMC
President & Founder
Western Management Assoc.

1st Vice Chair
Klint James McKay, JD, MBA
Attorney-at-Law
McKay & Meyer

2nd Vice Chair
Bradley Stallard
Senior Vice President
Pacific Western Bank

Treasurer
Kevin D. DeBre, JD
Attorney-at-Law
Greenberg Glusker Fields
Claman Machtinger
& Kinsella LLP

Secretary
Alan R. Polsky, JD
The Polsky Law Firm

Immediate Past Chair
Leslie B. Abell, JD
Attorney-at-Law
Myman, Abell, Fineman,
Greenspan and Light, LLP

Fred Alavi, MBA
Executive Vice President
Pacific Mercantile Bank
Tevis Barnes, MPA
Housing Administrator
Community Development
Department
City of Culver City

Gerald Chernin
ECF Client
Consumer Advocate

Edna M. Chism, JD
Attorney-at-Law

Shirley D. Deutsch, JD
Attorney-at-Law
Gordon & Rees, LLP

Phyllis Gainsborough, MS, MFT
Special Education Teacher &
Marriage & Family Therapist

Charles M. Grace, MBA
Entrepreneur & Owner
CMG Enterprises

Gretchen S. Lewotsky
Vice President of
Public Relations
20th Century Fox

Marilyn Mann Lindquist, MSN
Registered Nurse
& Parent Advocate

Philip G. Miller, J.D.
Attorney & Real Estate Investor

Arthur D. Naddour
Retired Businessman
Auto Restoration & Appraisal

Vincent E. Pellerito
Senior Managing Director
Julien J. Studley, Inc.

Joseph N. Tilem, JD
Attorney-at-Law
Tilem & Gole

PRESIDENT & CHIEF
EXECUTIVE OFFICER
Scott D. Bowling, Psy.D.

PRESIDENT EMERITUS
Robert D. Shushan, Ed.D.

message

ECF'S COMMITMENT TO SERVICE

It is during the difficult times when commitment is tested the most. These tests can be experienced in our personal and in our professional lives. I believe it is safe to say that California citizens and businesses have been tested recently. The cost of living and doing business in our state continues to rise at a time when performance and outcome expectations are perhaps higher than ever. Despite the challenges offered by today's economic and business climates, ECF's commitment to service permeates all levels of our organization.

A few highlights:

- ECF has made tremendous progress on the strategic plan goals and objectives. As of today, ECF has met 16 of the 24 objectives in our three-year strategic plan, and there is still another year to go to meet the remaining objectives.
- ECF continued to make respectable progress on the organization's first development campaign. With a three-year goal to raise \$2.2 million by mid-year 2005, the campaign has raised over 54% of the goal and hopes to reach the targeted amount on schedule! These funds are being used to implement our strategic plan.
- Donations from the community continue to rise. In every major category of giving, ECF has seen an increase in the amount of support we've received!
- ECF's computers and computer network have been upgraded significantly.
- Nutritional consultation services and family emergency food pantries have been established at the ECF's Early Start Centers to help the families that we serve.
- ECF now offers internship opportunities for aspiring professionals in the field.
- Earlier this year, ECF acquired a six-bed community care facility from a small non-profit organization called Westside Opportunity Workshop (WOW). The home is located on Barman Avenue in Culver City and has been licensed by the State of California.
- On May 1, ECF successfully converted its community care facility (called Valverde) in Reseda to an Intermediate Care Facility (ICF). This significant accomplishment established the organization's first Medi-Cal funded program and our first facility licensed by the Department of Health Services (DHS)! Most importantly, our residents at Valverde will now be able to remain in their home despite having increased self-help and nursing care needs.

- ECF continues to devote the resources necessary to keep our supported living services at the "cutting edge" of service delivery! Currently, this innovative model serves 13 adults, many of whom have special challenges beyond their developmental disabilities.
- ECF expanded its renowned Art Center program to the South Bay earlier this calendar year. Councilwoman Janice Hahn and nearly 100 friends of ECF welcomed the new ECF Art Center to the San Pedro community in February. This development was made possible thanks to the generous support of Harbor Regional Center, as well as a grant from Aaron Brothers.
- Facility modifications to the Venice Building are underway in preparation for licensing of ECF's new Adult Day Healthcare Center by the Department of Health Services (DHS). ECF expects to open this important program in September.
- In an effort to increase contract sales at PAR Services, ECF has developed new marketing materials, as well as a new slogan for its promotional materials: "Capable People Helping Your Business Succeed."
- ECF is among the first organizations in the state to participate in the "Ticket to Work" program. This new national program is funded by the Social Security Administration (SSA) and began in California in November of 2003.

We're looking ahead...

There is still a lot of work to do for the many children and adults who rely on us. Fiscal threats to our service-delivery system are likely to continue well into the future. Therefore, it is imperative that all of us continue to work together to ensure the viability of our programs for the benefit of the children and adults we serve and the communities in which we live and work.

Each day, there are opportunities to educate our friends and business associates about the needs of people with developmental disabilities and the value of ECF's work. Please help us by taking advantage of these opportunities in order to preserve our vision and our commitment to service.

Additionally, if you have not yet made a pledge or a special contribution to ECF's Development Campaign, please consider doing so. ECF's ability to fulfill the goals of the three-year Strategic Plan depends on your generous assistance. ■

SCOTT BOWLING, PSY.D.
President & Chief Executive Officer



MONTE MARKHAM ELECTED TO ECF BOARD OF GOVERNORS

The Exceptional Children's Foundation is very proud to announce that Monte Markham has been elected to the Board of Governors.

Markham's versatility has created a richly varied, exceptional career. Celebrating the 10th anniversary of his production company, Perpetual Motion Films, he has produced and directed over 100 documentaries for A&E Networks and the History Channel, including specials filmed in China, "Chinatown" and "China's Great Dam," and the multiple hours series—"The Royal Navy," "America On Guard," "Fly Past," "Search & Rescue," "Masters of War," and "Air Combat."

His ten biographies include "Michelangelo," "Thomas Jefferson," and "Benjamin Franklin," and are among the hallmarks of A&E's Emmy Award winning biography series. With over 50 countries competing, Perpetual Motion Films has received the New York Festival's Gold and Silver Medallions for the 35 hours of their series, "The Great Ships," and the two-hour special, "The Killer Storm."

Markham has directed feature films "Neon City" and "Defense Play" and has directed and starred in multiple episodes of "Baywatch." As an actor, he has starred in four television series of his own, including "Second Hundred Years," "Mr. Deeds Goes to Town," and "The New Perry Mason," all major series. He has starred in critically acclaimed feature and television motion

pictures and received the Theater World Award for his performance in "Irene" on Broadway. In addition, he has been on camera as host or narrator for over 100 television documentaries.

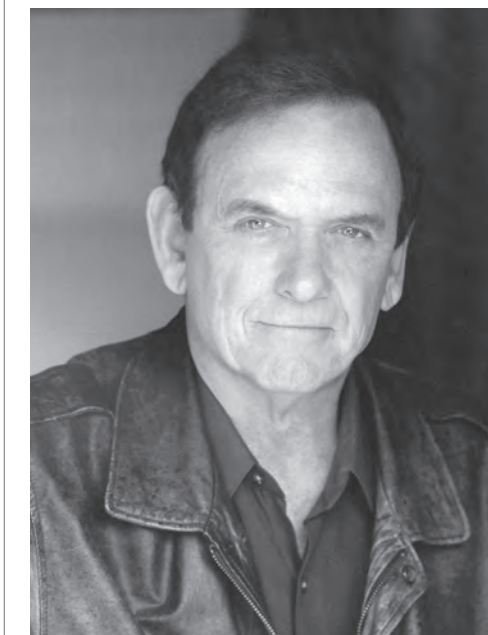
Markham has also starred in memorable feature films, such as "Midway" and "The Guns of the Magnificent Seven" and made-for-television movies, such as "Death Takes a Holiday" and "The Astronaut."

A distinguished alumnus and adjunct professor of the University of Georgia with an MA degree in Theater and English Literature, he has received the Governor's Award of Florida's Community Colleges and the Fellow of Maritime History Award from the Columbia River Maritime Museum. He was honored at ceremonies in Washington, D.C., with the U.S. Coast Guard's Meritorious Public Service Medal, awarded by the Commandant.

Markham is a member of The Academy of Motion Picture Arts and Sciences and a veteran member of the Academy's Documentary Committee; a member of the Academy of Television Arts and Sciences and the Academy's Emmy Blue Ribbon Awards Panel; a former Board Member of the Screen Actor's Guild; a member of the Director's Guild of America; and a fellow of the Explorer's Club.

Markham and his wife Klaire have two children—Keevil, an attorney, who has twins age 6,

and Jason, who is a business partner with them. Markham and his wife have a personal interest in the mission of the Exceptional Children's Foundation because they are responsible for their niece Tori, age 31, who has undefined developmental disabilities and is in an independent living arrangement in Florida. ■



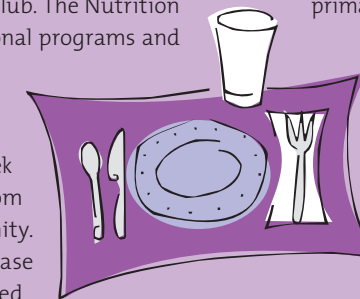
NUTRITION EDUCATION FOR ECF FAMILIES

ECF's Early Start program has added a new component to its recently-established Family Resource Center—thanks to a generous start-up grant from the K & R Foundation. At the Lomita site, partial funding was provided by the Palos Verdes Junior Women's Club. The Nutrition Education Program provides 12 months of educational programs and consulting services to hundreds of families involved in ECF's Early Start program.

ECF has worked with the University of California Cooperative Extension to provide a series of eight-week workshops in July and August 2004 to families from ECF's Early Start programs and the local community. Family members learned economical ways to purchase food for their families and ways to modify food-related behavior and attitudes.

When parents feed their family nourishing foods, including fruits, vegetables and milk products, their children are significantly healthier. National studies show that for every \$1 spent to implement a nutrition education program, up to \$10 is saved in healthcare costs and \$2.50 in food expenditures.

The course curriculum included open-ended conversations, demonstrations, recipes and cooking techniques, and program materials that are written in both English and Spanish. Classes were conducted in the primary language of the audience. Ingredients and cooking supplies



were acquired for hands-on cooking classes, demonstrations, and sampling. These participatory elements bolster confidence in duplicating recipes and cooking processes at home. Incentive prizes like Recipes and Cooking Tips were awarded to family members to encourage participation and attendance. At the end of the course, participants received certificates of completion.

This is a valuable addition to the Family Resource Center, which serves as an information program and service center for families who have young children with autism, mental retardation, cerebral palsy, epilepsy and other developmental disabilities. ■



1. From left to right: Art Naddour, Sandy Wolff, Fred Alavi

2. Carl Terzian and Scott Bowling

3. From left to right: Susan Emadi, Hal Harrigian, Ziba Sabeti

4. From left to right: Eli Azodi, Marc Benezra, Homeyra Amirteymour

5. Les Abell

6. From left to right: Artur Mager, Edna Chism, Scott Bowling

7. From left to right: Gene Siciliano, Angela Sanli, Nevin Sanli

8. Joyce Rey

BOARD OF DIRECTORS WELCOMES NEW MEMBERS

The ECF Board of Directors is proud to announce the five new additions to its team in recent months. These new members bring the Board to its maximum composition of 19 in total.

>> **Fred Alavi**, Executive Vice President of Pacific Mercantile Bank, brings a strong background in banking and real estate to ECF. Prior to joining Pacific Mercantile Bank, he served in key executive positions with American Safety Financial Corp. and Pacific National Bank, which merged into Santa Monica Bank. Alavi received his M.B.A. degree from Rutgers University in New Jersey.

Both Alavi and his wife (Homeyra Amirteymour) have been actively involved in ECF in a variety of ways for more than a year. They have served on the Development Campaign Cabinet, have introduced dozens of friends to ECF, and have brought in thousands of dollars to ECF. In addition, they have helped with planning the 2004 gala "Timeless Friendships" and have donated large quantities of their son Alexander's outgrown clothing and toys to the Early Start program.

Alavi has a passion for helping the underprivileged and children with developmental disabilities. He believes that people who are blessed with health and economic success should give back to the community. As a member of the Board, he wants to continue helping raise funds for ECF through his personal contacts and involvement in both the Persian and the Jewish communities of Beverly Hills and West Los Angeles.

>> **Tevis Barnes**, Housing Administrator for the Culver City Community Development Department, earned an M.A. degree in Public Administration from the University of Southern California. Barnes has previously worked with the City of Pasadena as a Program Coordinator and Project Manager. Prior to that, she was a Program Coordinator for the Housing Authority of the City of Los Angeles. Because of this background, she has a strong interest in issues related to housing and supportive services in the community.

Barnes is also familiar with developmental disabilities through a young relative with autism, who has been helped by the one of the Regional Centers. Consequently, she is pleased to share her knowledge and "give back" to the community by serving on ECF's Board.

Barnes became acquainted with ECF when she worked on the transfer of a group home from another Culver City nonprofit to ECF earlier in 2004.

>> **Phil Miller**, self-employed in the business of real estate investment, earned his B.S. and M.S. degrees from the University of California at Los Angeles and his J.D. from Columbia Law School, where he was a member of the Columbia Law Review. He has purchased and sold more than 4,000 apartment units totaling in excess of \$250 million in his capacity as a general partner of limited partnerships.

Miller believes that part of being a member of a society is to make a contribution with no expectation of payment other than positive feelings, which come from within. In the past, most of his charitable endeavors have been primarily one-on-one, have involved animals, or were contribu-

tions of money. He has maintained a close relationship with his "little" brother over the past 11 years and has coached youth basketball for 10 years. He also served on the Board of Directors of the Westland School, which his sons attended.

Miller has turned his life-long interest in animals into a small zoo at his home with over 500 animals! He has taken his animals to visit many school classrooms and has hosted tours of his yard by different groups of children. He also took animals to visit small classes of preschool children with developmental disabilities, while his wife was a teacher/psychologist at Cedars-Sinai Cheerful Helpers for 15 years.

>> **Vince Pellerito**, Senior Managing Director of Julien J. Studley, Inc., specializes in providing tenant advisory and transactional services to Fortune 1000 companies, law firms, financial institutions, and non-profit firms on a local, regional, and national basis. He has successfully represented clients in more than 300 tenant representation assignments involving five million square feet of real estate during his 13-year career. Pellerito attended San Diego State University on a football scholarship and earned his B.A. degree in Economics with a minor in Finance from Long Beach State University.

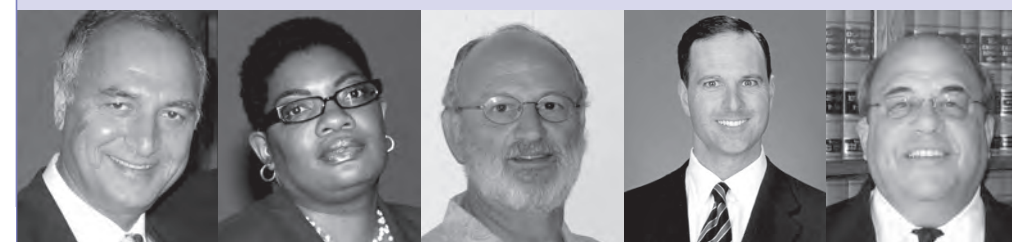
Pellerito has been involved in the greater Los Angeles non-profit community in a variety of ways. For the past several years, he served on the Board of Directors for the Harbor Regional Center, which provides \$60 million in services annually to individuals with developmental and physical disabilities. He has also served on the Board of Directors of the Los Angeles Economic Development Corporation and has been actively involved with the Catholic Big Brothers program for the past many years as a Big Brother.

Pellerito was familiar with ECF from his work with the Harbor Regional Center. His interest in the community of service providers to people with developmental disabilities arises from experience with a relative who is affected by mental retardation. Vince will begin his service to the ECF Board of Directors in September.

>> **Alan Polsky** of The Polsky Law Firm in West Los Angeles earned his J.D. degree from the University of Nebraska, where he was awarded the national honor of Order of the Barrister. His practice focuses on business counseling and business litigation. He has also served the community as a Judge Pro Tem for the Los Angeles Superior Court and as a mediator and an arbitrator in alternative dispute resolution.

As a teenager, Polsky taught swimming to children and young adults with mental retardation. Later in his career, he was involved in Federal Court litigation concerning the care, quality of assistance, and the education provided for people with mental retardation in state-operated facilities. These experiences have made him committed to ensuring that all people receive the chance to develop, experience, and participate in the community to their fullest abilities.

Polsky became involved with ECF by volunteering his business expertise to help PAR Services with its marketing plan. ■



From left to right: Fred Alavi, Tevis Barnes, Phil Miller, Vince Pellerito, Alan Polsky.